

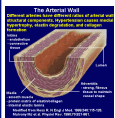
Pre-Registration
is Required



Sign-Up
Today!

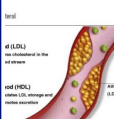
You May be At Risk Without Any Signs or Symptoms
Non-Invasive, Painless Health Screening

Personalized Preventative Medicine



Large Artery

Increased arterial stiffness is associated with an increased risk of cardiovascular events such as heart attack and stroke, **the two leading causes of death in the developed world**



LDL Cholesterol

LDL particles are sometimes referred to as **bad cholesterol** because they can transport their content of fat molecules into artery walls, thus drive atherosclerosis



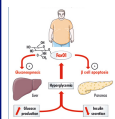
P.A.D.

Peripheral vascular disease is a sign of fatty deposits and calcium building up in the walls of the arteries (atherosclerosis). Risk factors include aging, diabetes, and smoking.



Metabolic Syndrome

Metabolic syndrome includes high blood pressure, high blood sugar, excess body fat around the waist, and abnormal cholesterol levels. The syndrome increases a person's risk for heart attack and stroke.



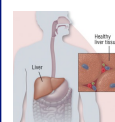
Beta Cell Function

Beta Cell stores and releases **insulin**. Insulin is a **hormone** that brings about effects which reduce blood glucose. Beta cells can respond quickly to spikes in blood glucose concentrations by secreting some of their stored insulin while simultaneously producing more.



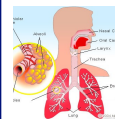
Thyroid Dysfunction

Thyroid disorders can range from a small, harmless **goiter** (enlarged gland) that needs no treatment to life-threatening **cancer**. The most common **thyroid problems** involve abnormal production of thyroid hormones.



Chronic Hepatitis

Chronic hepatitis, liver inflammation continues for at least six months. This condition may be mild, causing relatively little damage, or more serious, causing many liver cells to be destroyed. Some cases lead to cirrhosis and liver failure.



Lung Disorders

Lung disease can result from problems in any part of the airway system including: Asthma, COPD, Allergies, Bronchitis, Emphysema, and Cystic Fibrosis.



Stress / Depression

By measuring Serotonin and Dopamine levels, The Bio Scan effectively identifies levels of stress, anxiety, and depression.



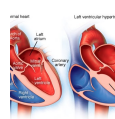
Body Composition

Measuring the lean muscle tissue and the amount of fat; the Bio Scan breaks down what type of weight is in the body and provides accurate levels.



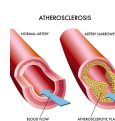
Carotid Artery

These arteries supply oxygenated blood to the face and brain. This screening may identify presence of plaque build up and blockages. **The #1 cause of stroke is restriction of blood flow in this area.**



LV Hypertrophy

Left ventricular hypertrophy (LVH) is the thickening of the (muscle) of the **left ventricle** of the **heart**. growth can regress with the reduction of blood pressure and controlling emotions.



Atherosclerosis

A build up of cholesterol plaque in the walls of arteries causing obstruction of blood flow. Plaques may rupture causing acute occlusion of the artery by clot.



Type 2 Diabetes

The hormone insulin helps control the amount of sugar (glucose) in the blood. With insulin resistance, the body's cells don't respond normally to insulin. Glucose can't enter the cells as easily, so it builds up in the blood. This can eventually lead to type 2 diabetes.



Blood Glucose

Blood Glucose uncontrolled can take a toll on nearly every organ in many organs of the body including: Eyes, Kidneys, Nerves, Heart, Gums and Teeth.



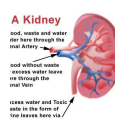
Liver Fibrosis

Fibrosis occurs when excessive scar tissue builds up faster than it can be broken down and removed from the liver. Chronic infection with **hepatitis C** or **hepatitis B** virus (HCV or HBV), heavy alcohol consumption, toxins, trauma can all lead to liver fibrosis.



Digestive Disorders

Digestive disorders include the treatment of diseases of the liver and digestive tract, including the stomach, duodenum, gallbladder, biliary tract, pancreas, small intestine and colon.



Kidney Disorders

Kidneys are the organs that help filter waste products from the blood. They are also involved in regulating **blood pressure**, electrolyte balance, and red blood cell production in the body.



Exercise

By identifying potential problems areas in the Neuromuscular system, we are able to recommend safe and effective exercises.



Menu Plan

Since the test is tissue based; the Bio Scan tests the nutrient deficiencies in each living tissue and organ and recommends foods based on your individual needs.

Complete Preventative Health Screening Package (Includes 20 Screenings) FREE \$199
Nov 29th 6pm-8pm - 5509 Louetta Rd Suite C Spring TX 77379

ITHRIVEhealth.com/Bionik 888-982-8539 screenings@ITHRIVEhealth.com